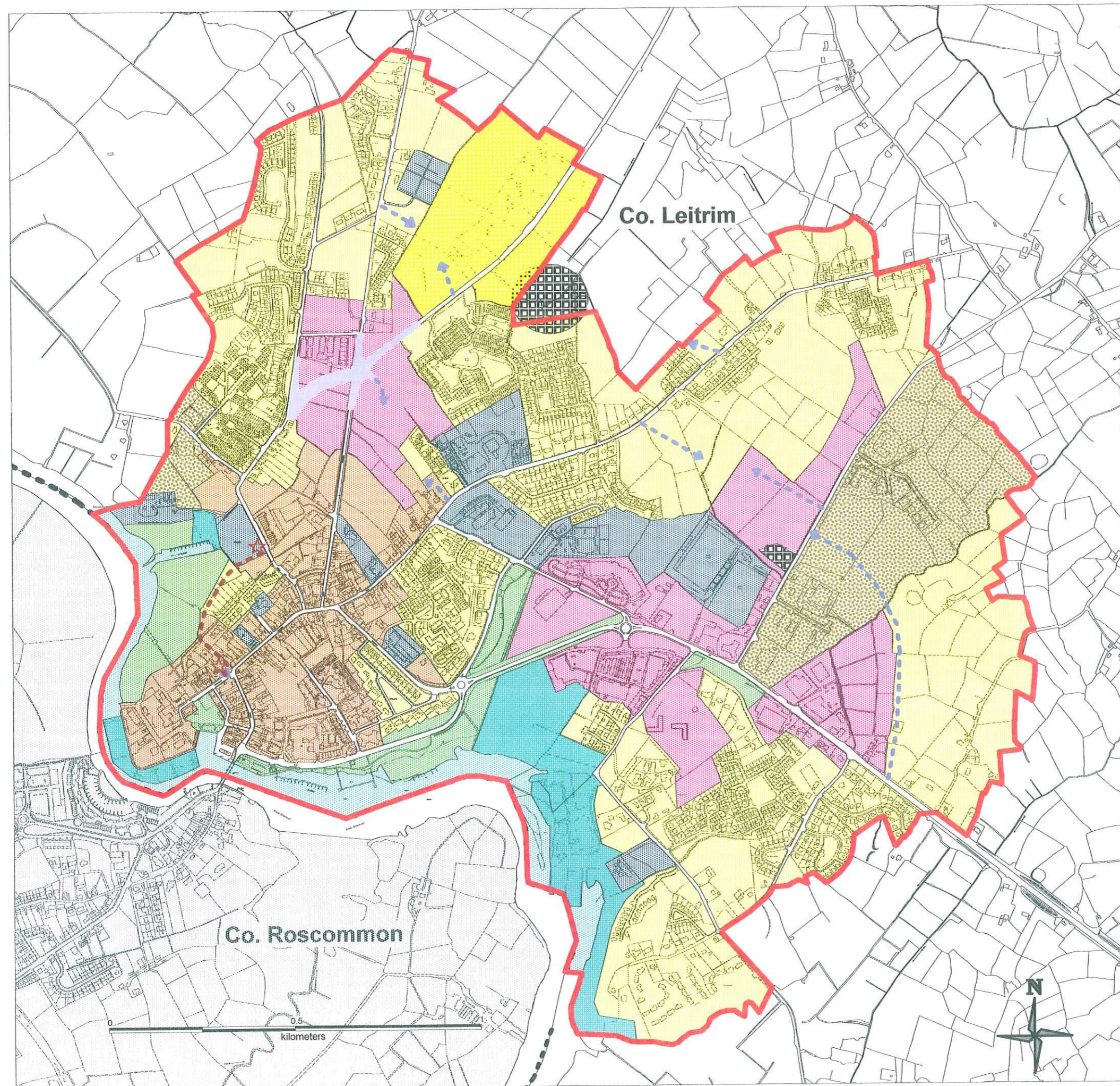


ZONING MAP FOR CARRICK-ON-SHANNON

Draft Local Area Plan 2010-2016



LEGEND

- Primarily Residential
- Primarily Residential (low density)
- Mixed Use
- General Development
- Enterprise & Employment
- Open Space & Amenity
- Social & Community Use
- Riverside Development
- River Navigation & Amenity
- Attenuation Areas
- Indicative Access Points/Routes
- Potential Future Access Route (See Objective 5.2b)
- Preliminary Road Reserve at Hartley Junction
- Town Boundary