

# WATER

## CONSERVATION FOR PUBLIC USE

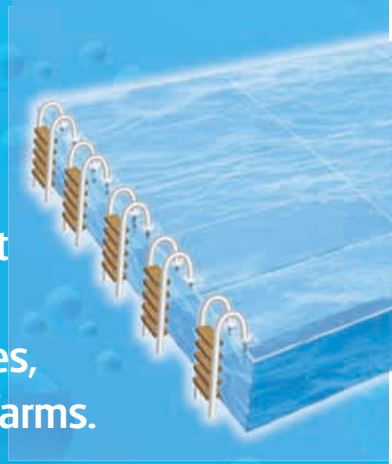


Leitrim  
County  
Council

**Leitrim**  
explore • experience • enjoy



Leitrim County Council collects, cleans and delivers 14 million litres of water a day (equivalent to over 6 Olympic size swimming pools) to homes, schools, businesses and farms.



This leaflet shows you how to use water more effectively in your home or business. It is surprising, but with just a little more thought it is easy to reduce the amount of water used.



Water conservation is a year round responsibility, and just as important during times of heavy rainfall as it is in drought.





## Some Water Usage Facts



We each use on average 150 litres (33 gallons) of clean treated water every day.



A running tap can use up to 10 litres (2.2 gallons) of water a minute.



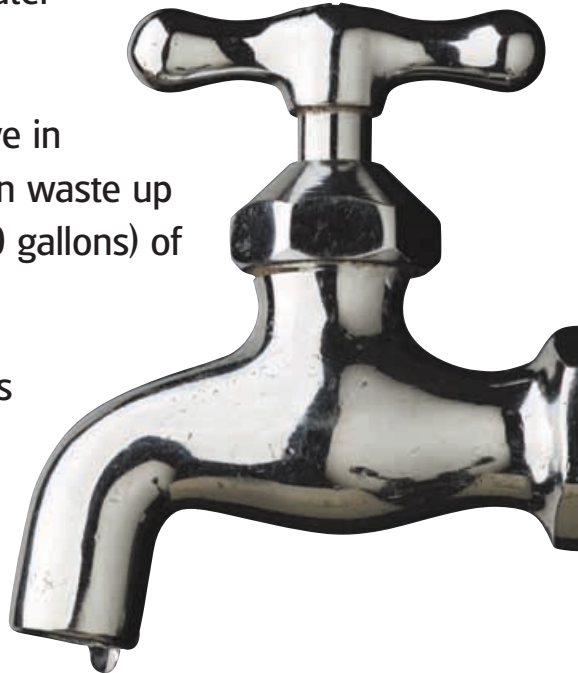
A dripping tap can waste up to 40 litres (8.8 gallons) of water a day.




A leaking ball-valve in a water trough can waste up to 150 m<sup>3</sup> (33,000 gallons) of water per year




A dishwasher uses between 10 and 40 litres (2.2 and 8.8 gallons) per cycle whether it's full or not.




# More on dishwashers...

 A more efficient dish washer will use as little as 15 litres per wash cycle, compared with some older models that use up to 50 litres.


## The dishwasher vs washing up by hand

 Recent research shows that conventional washer-uppers average 63 litres per session, and, if they rinse the detergent under a running tap, this rises to 150 litres.



 A modern dishwasher can use as little as 15 litres per cycle!


## Toilets and urinals

 Each toilet can use between 5 & 15 litres (1.1 and 3.3 gallons) of water depending on the size of the toilet cistern. This further increases with urinal flushing.

 Do the urinals in Mens toilets flush all the time?  
*If yes, ask if this is necessary?*



# Does your business have a water leak?

 Find out where your water meter is. Normally your meter is located close to the property boundary in a chamber with the stopcock. If you have difficulty locating your meter Leitrim County Council will be able to assist.

*Note: It is the consumers responsibility for maintenance and prevention of wastage from the meter.*

**Read your meter as work finishes at night – enter the reading.**

**A**

--	--	--	--	--	--	--	--	--

**Read it before work starts in the morning – enter the reading.**

**B**

--	--	--	--	--	--	--	--	--

**How much was used overnight? (B minus A)**

**B-A**

--	--	--	--	--	--	--	--	--

*If there is a large difference, there may be a leaking pipe or some unnecessary water usage.*

**If this value increases...**

 **has consumption increased**

 **has a tap started dripping?**

 **or is it a leak?**

# Checking for leaks



There are two simple ways to **check for leaks...**

## 1. Visual checks



Check the ground above your pipes to look for visible signs of a leak, such as unusually damp ground.

## 2. Use your water meter

If you have a water meter you can use it to check for leaks.

Turn off all taps and appliances which use water, then check the meter. If the counter is turning, you may have a leak.

But make sure everything is turned off.

It's a good idea to take a meter reading every week or so.

***If you're using more water...***

 ***has a tap started dripping?***

 ***is an overflow running?***

 ***or is it a leak?***

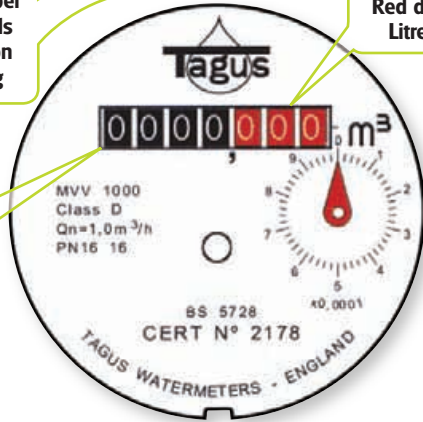
# Reading your water meter

1 cubic metre [m<sup>3</sup>]  
=  
1000 litres  
or  
220 gallons

Meter Serial Number  
which corresponds  
with your bill is on  
the meter casing

Black display  
cubic metres (m<sup>3</sup>)

Red display  
Litres (l)



## Water saving Tips

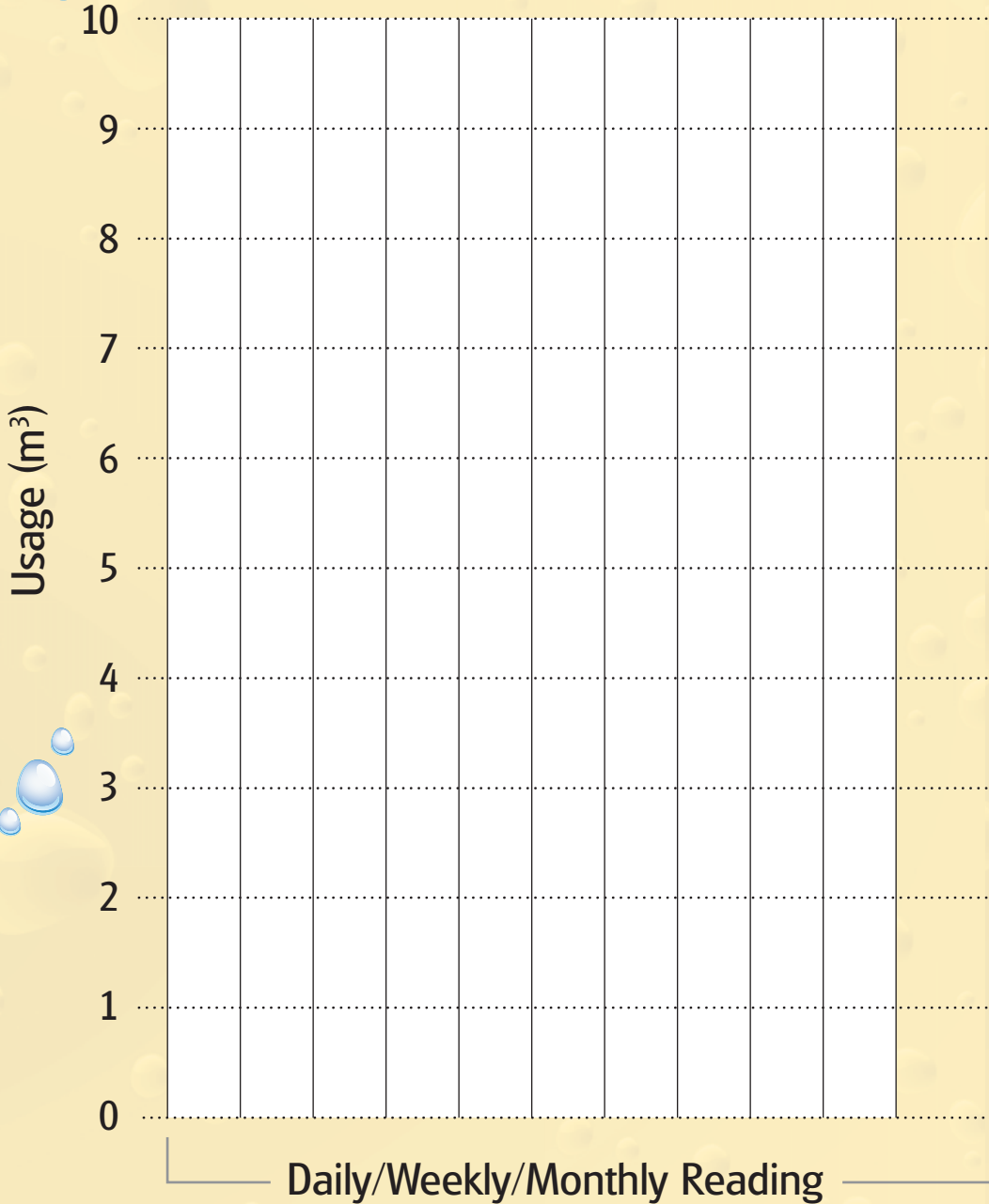
- Do not leave taps flowing for any purpose
- Turn off any automatic flush systems that are not used.
- Check valves and drinking troughs regularly.
- Re-use collected rainwater for any applicable purpose.
- Check your meter regularly and maintain a record of your usage.
- Promote water harvesting techniques:
  - Collect rainwater from your roof and use for your garden or washing patios, lawn sprinkling, etc.
  - Don't waste valuable treated drinking water on your garden, etc.







# YOUR BUSINESS WATER

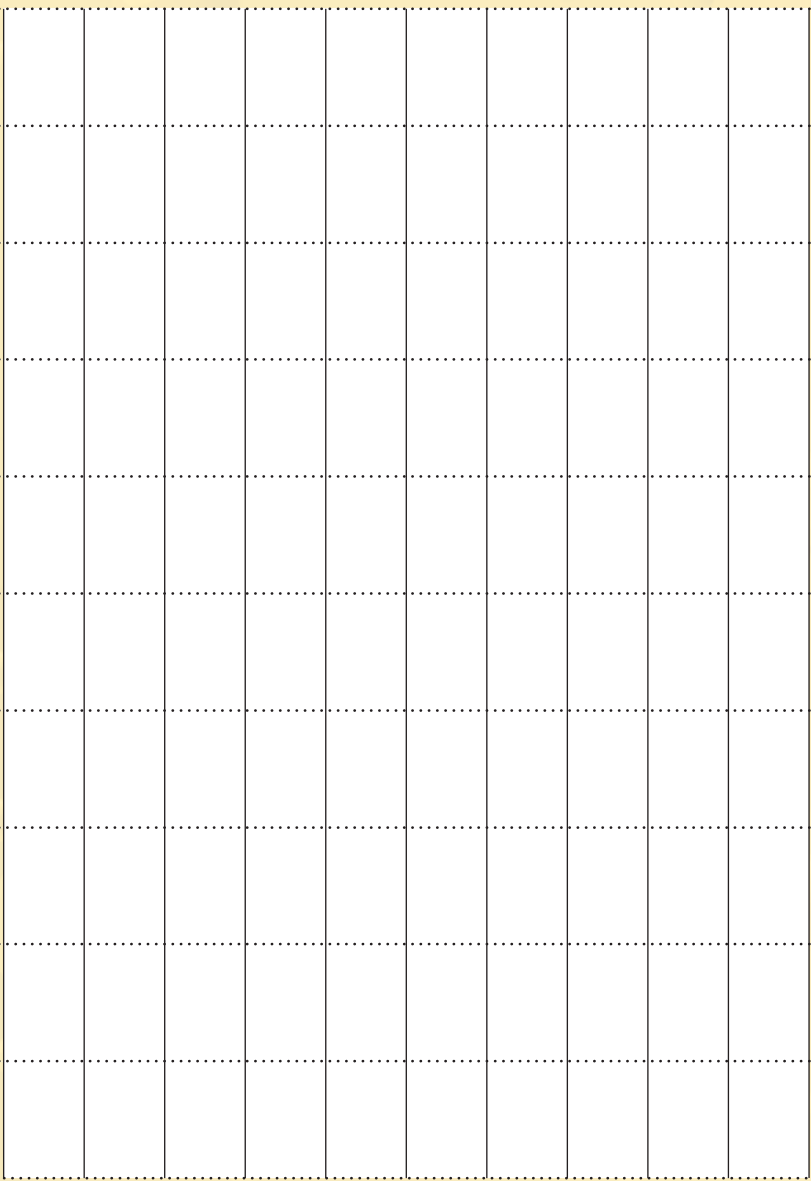


# WATER CONSUMPTION



10  
9  
8  
7  
6  
5  
4  
3  
2  
1  
0

Usage (m<sup>3</sup>)



Daily/Weekly/Monthly Reading



## Water Conservation

Water Services Section  
Leitrim County Council

Water Services Hotline: 1890 302 302

E-mail: [waterconservation@leitrimcoco.ie](mailto:waterconservation@leitrimcoco.ie)



Leitrim  
County  
Council

**Leitrim**  
explore • experience • enjoy