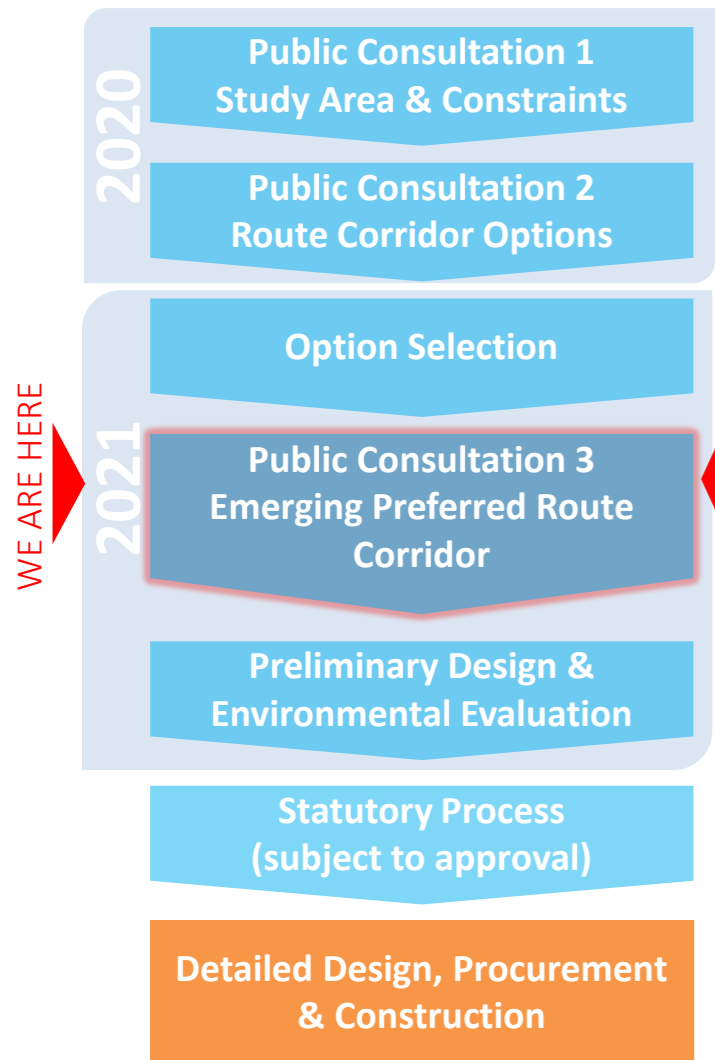


PUBLIC CONSULTATION ROADMAP



HAVE YOUR SAY

We welcome your views on the Emerging Preferred Route Corridor and also any information which you would like the Project Team to consider in identifying a Preferred Route Corridor ('Preferred Option').

Questionnaire: A consultation questionnaire accompanies this brochure. A digital copy of this questionnaire can also be downloaded from the project webpage on www.leitrimcoco.ie. Please complete and return this questionnaire by **Thursday 22nd April 2021** by:

Post: N16 Munakill Project Team, RPS Consulting Engineers, 7 Beulah Building, Finisklin Road, Sligo, F91 A0H9

Email: n16munakill@rpsgroup.com

Meet with the Project Team: The N16 Project Team is available to answer any questions and provide information to assist you with your submission.

The Project Team can be contacted during office hours at 071 9138909 (Weekdays 9am-5pm) and at n16munakill@rpsgroup.com.

If you would like to arrange an online consultation meeting with a member of the Project Team, please contact us by phone or email to book an appointment. Online meetings (via MS Teams or Zoom) will be facilitated between April 9th and April 22nd 2021.

N16 Munakill Realignment

INFORMATION BROCHURE



FURTHER INFORMATION

See the project webpage at www.leitrimcoco.ie or email/mail the Project Team:

Engineering Design Consultants (RPS):

N16 Munakill Project Team
RPS Consulting Engineers
7 Beulah Building, Finisklin Road
Sligo, F91 A0H9
Email: n16munakill@rpsgroup.com



Leitrim County Council:

Senior Engineer, Roads Department
Leitrim County Council
Áras an Chontae, Carrick-on-Shannon
Co. Leitrim, N41 PF67
Email: roads@leitrimcoco.ie



THANK YOU

The Project Team wishes to thank all stakeholders and residents for providing their feedback during Public Consultation 2 (Route Corridor Options) and for their assistance during the development of the proposed scheme.

We look forward to receiving your feedback as part of Public Consultation 3 (Emerging Preferred Route Corridor).

QR Code for Project Webpage:



EMERGING PREFERRED ROUTE CORRIDOR PUBLIC CONSULTATION 3

24th MARCH – 22nd APRIL 2021



An Roinn Iompair
Department of Transport



Comhairle Chontae Liatroma
Leitrim County Council



PROJECT OVERVIEW

Leitrim County Council is working in partnership with the Westmeath National Roads Office and in association with Transport Infrastructure Ireland (TII) to develop a scheme to upgrade a section of the N16 at Munakill.

Following the second public consultation and completion of Stage 2 of the Option Selection Process by the Project Team, the 'Emerging Preferred Route Corridor' has now been identified in accordance with TII's Project Management Guidelines.

PROJECT DESCRIPTION & NEED

The N16 Munakill scheme is located 4km east of Manorhamilton and forms part of the N16 National Primary route which is a strategic east-west transport corridor. The purpose of the realignment scheme is to improve this 3.7km section of the existing N16 and to address its various issues such as poor horizontal and vertical alignment, its unforgiving roadsides, the absence of hard-strips or other facilities for vulnerable road users, and the numerous direct accesses and entrances, many of which have poor visibility.

The scheme will tie-in to the previously improved section of the N16 at Cornacloy (to the east). This will result in a combined improved length of approximately 8km of national primary road through County Leitrim, and bring efficiency and improved road safety.

WHAT'S HAPPENING NOW

The Project Team has undertaken an appraisal of the Route Corridor Options, presented during Public Consultation 2 which was held between 18th November and 18th December 2020 and has considered the feedback from the public to identify an 'Emerging Preferred Route Corridor'. This is Stage 3 of the Option Selection Process as defined in TII's Project Management Guidelines.

An Emerging Preferred Route Corridor is the Route Corridor Option that has been assessed as providing the optimum combination of benefits vs impacts with regards to the following criteria which are considered for road transport projects:

- Economy
- Safety
- Environment
- Accessibility & Social Inclusion
- Integration
- Physical Activity

The Emerging Preferred Route Corridor is typically 60m wide. The 60m corridor does not represent the actual width of the road scheme or the lands to be acquired but rather indicates the lands within which the scheme could be developed. As the design progresses, and additional consultation and assessments are undertaken, there may be a requirement to extend beyond the Emerging Preferred Route Corridor to optimise the design and to avoid or minimise significant effects on landowners and the environment. The exact details of the land take, earthworks, junction design, side road design and property impacts will also be developed during the next Phase of the planning and design process.

The Emerging Preferred Route Corridor public consultation period will run for four weeks between 24th March and 22nd April 2021. During this public consultation we are inviting feedback on the Emerging Preferred Route Corridor. Submissions can be made by completing the consultation questionnaire and returning it to the Project Team.

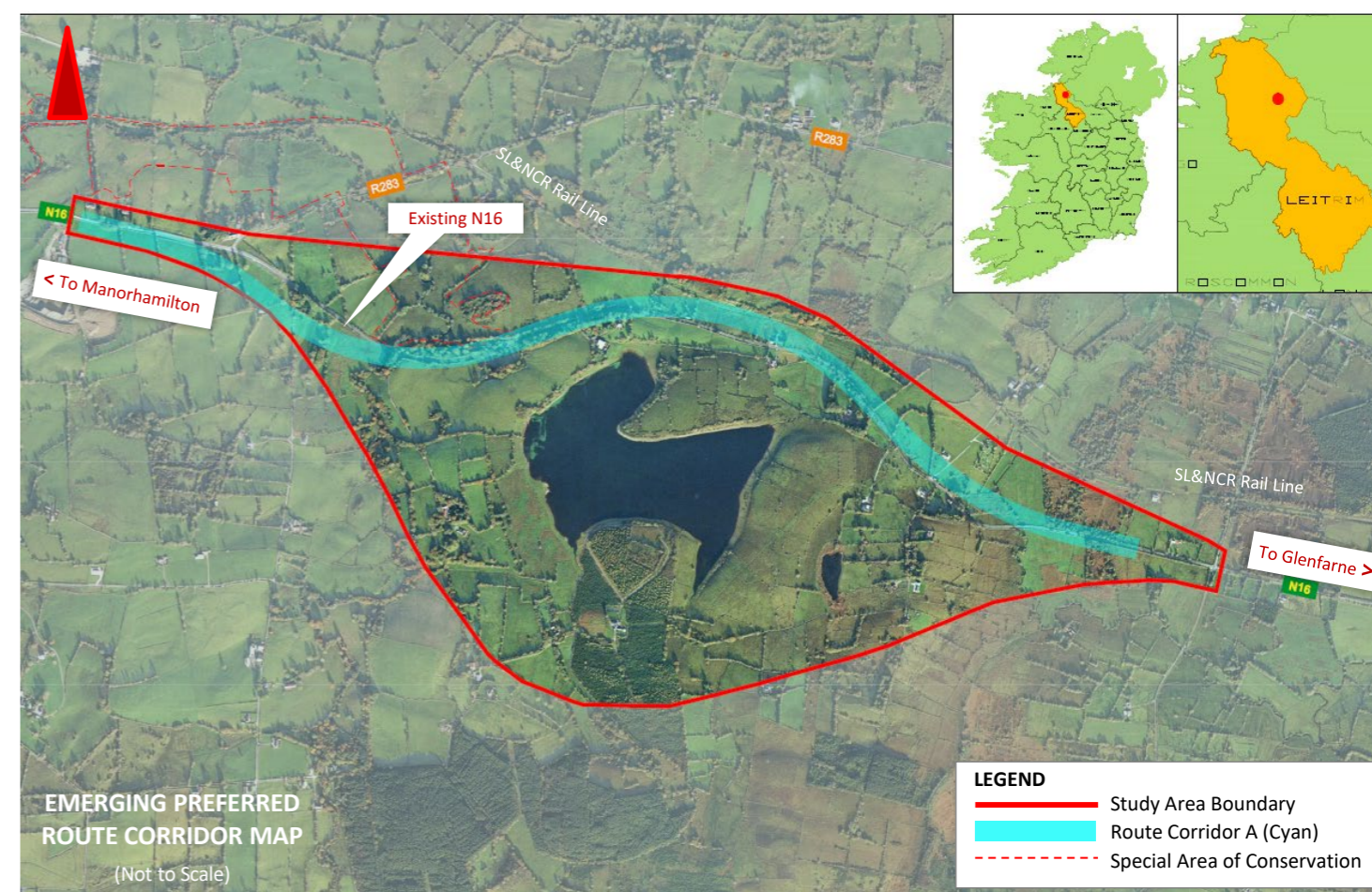
NEXT STEPS

Feedback and submissions received through this 3rd non-statutory public consultation will be considered by the Project Team before a Preferred Route Corridor ('Preferred Option') is finalised. The Phase 2 Option Selection process will then be complete and the 'Option Selection Report' and 'Preferred Route Corridor' will be published. As indicated on the Public Consultation Roadmap on the next page, this is expected to take place in mid 2021. Updates, news and details will be published on www.leitrimcoco.ie and through local press and media.

After a Preferred Route Corridor is finalised the next Phase of the planning and design process can commence (subject to relevant approvals), which will include undertaking detailed surveys, identifying the landtake required, junction and access designs and the preparation of an Environmental Impact Assessment Report. During this phase further engagement with landowners and interested parties will be undertaken as part of the ongoing design process.

EMERGING PREFERRED ROUTE CORRIDOR MAP

Please see below a map of the Emerging Preferred Route Corridor, which can also be downloaded from the project webpage on www.leitrimcoco.ie. An A3 handout accompanies this brochure showing further details of the indicative N16 route and of the appraisal process used to determine the Emerging Preferred Route Corridor.



NOTE: The Emerging Preferred Route Corridor shown is approx. 60m wide. The corridor does not represent the actual width of the road scheme or the lands to be acquired – the corridor indicates the lands within which the scheme could be developed. As the design progresses, and additional consultation and assessments are undertaken, there may be a requirement to extend beyond the Emerging Preferred Route Corridor to optimise the design and to avoid or minimise significant effects on landowners and the environment.

PUBLIC CONSULTATION

This is the third non-statutory public consultation for the N16 Munakill Realignment. As before, all documents and information will be published on the project webpage on www.leitrimcoco.ie. In response to the COVID-19 restrictions around holding public events, a range of options to contact the Project Team have been made available. The Project Team can be contacted by the following means:

- By phone during office hours at 071-9138909 (Weekdays 9am-5pm) where members of the Project Team will be available to give an overview of the project and answer general questions.
- By Email at n16munakill@rpsgroup.com
- Online meetings will be facilitated within the period between April 9th and April 22nd 2021 via MS Teams or Zoom. Members of the public can book/arrange an online meeting with a member of the Project Team by phone or email.
- Should the current COVID-19 restrictions be eased during the course of the public consultation period, it may be possible to facilitate 'in-person' meetings, by appointment only, at a suitable venue. Strict adherence to COVID-19 guidelines will apply, in order to safeguard the health and safety of the public and staff.